

HYDRAULIC GASOLINE PUMP

AHGP SERIES

Reservoir Cap: 8L
 Flow at rated pressure: 0.78-5.5 L
 Motor Size: 3.2 kW(4hp)
 Max Operating Pressure: 700 bar

AHGP-4 8 4 CW

1 2 3 4

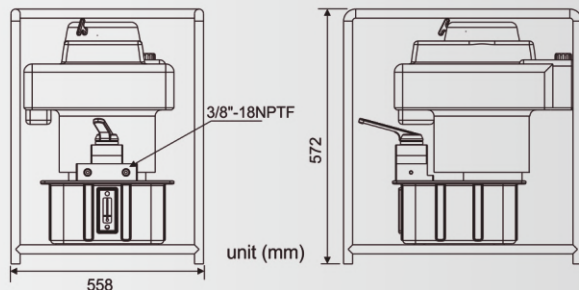
1. Motor
4=4hp(3.2kW)
2. Reservoir (Lx0.26=gal)
8=8L(2.1gal)
★User can order suitable reservoir.
3. Valve
3=Manual 3Way
4=Manual 4Way
4. Optional
W=Wheel
G=Pressure gauge



FEATURES

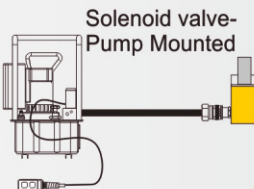
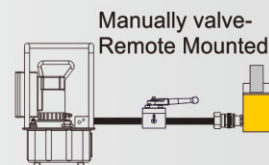
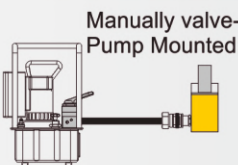
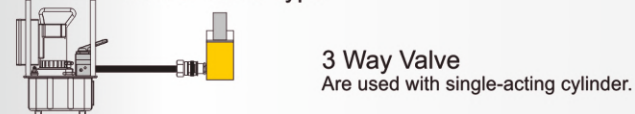
- Vary reservoirs for use with a wide range of cylinders and application.
- All pumps feature sturdy Roll Cages for use in tough environments.
- High by-pass pressure improve productivity on all model.

	Used with cylinder		Valve Function		
BASIC PUMP VALVE					
Manual 3 way Valve	•	•	•	•	•
Manual 4 way Valve	•	•	•	•	•



Model Number	Motor Type/ size	Flow Rate (L/min)		Valve Function	dBA at Idle and 700bar	Weight (kg)
		1 st stage	2 nd stage			
AHGP	Honda-4hp	5.5	0.78	Advance/Hold/ Retract	90	54

Control Valve Type



	Advance & Hold		Retract & Hold or Release	
	Manual Hold	Electric Hold	Manual Hold/ Release	Electric Hold/ Release
3 Way Valve				
4 Way Valve				

Most valve will be operated as left instruction. SW-700 series or special valve please check the catalogue

Ways:
 3-way valve has 3 ports: pressure (P), tank (T) and advance (A).
 4-way valve has 4 ports: pressure (P), tank (T), advance (A) and return (B).

Positions:
 The number of control points a valve can provide. A 2-position valve has the ability to control only the advance or retraction of the cylinder. To be able to control the cylinder with a hold position, the valve requires a 3rd position