

FEATURES

- Vary reservoirs for use with a wide range of cylinders and application.
- All pumps feature sturdy Roll Cages for use in tough environments.
- Two stage models for reduced cycle times and improved productivity.
- User adjustable external relief valve with a factory set upper limit prevents system overload.
- Easy to read integrated oil level sight glass.
- Totally enclosed fan-cooled motors are ideal for outdoor use in many environments.

HYDRAULIC ELECTRIC PUMP

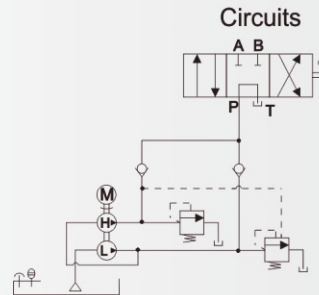
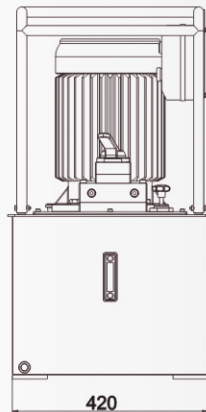
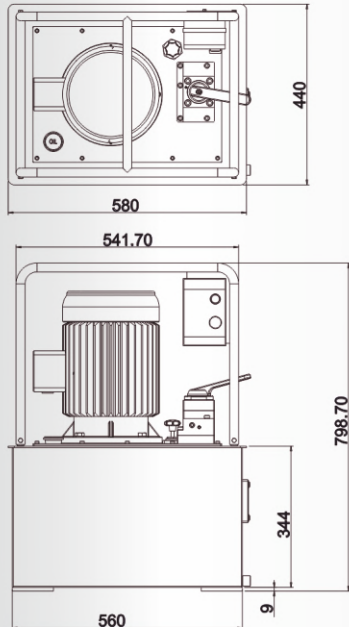
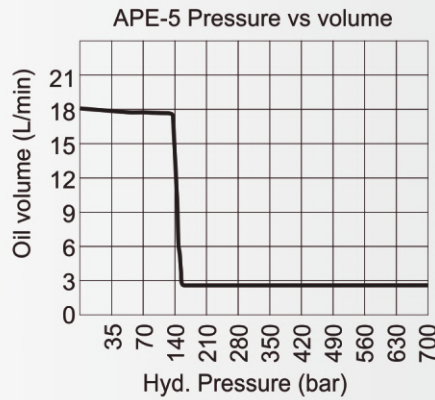
APE-5 SERIES

Reservoir Cap: 50-60L
 Flow at rated pressure: 2.6-18 L
 Motor Size: 3.7 kW(5hp)
 Max Operating Pressure: 700 bar

Custom build your Electric Pump:

APE- 5 2 6 3 50 4 CW
 1 2 3 4 5 6 7

- Motor
5=5Hp(3.7kW)
- Voltage
2=230V
3=380V
- Hz
5=50Hz
6=60Hz
- Phase
3=3ph
- Reservoir (Lx0.26=gal)
50=50L(13.2gal)
60=60L(15.8gal)
★User can order suitable reservoir.
- Valve
3=Manual 3Way
4=Manual 4Way
5=Solenoid 3way
6=Solenoid 4Way
7=Check Solenoid 3Way
8=Check Solenoid 4Way
- Optional
C=Remote control
W=Wheel
G=Pressure gauge



	Used with cylinder		Valve Function		
BASIC PUMP VALVE					
Manual 3 way Valve	•		•	•	•
Manual 4 way Valve		•	•	•	•

Model Number	Motor kW (hp)	Operation	Pressure Rating (bar)		Flow Rate (60Hz) (L/min)		Rpm	dBA at Idle and 700bar	Weight (50L no oil) (kg)
			1 st stage	2 nd stage	1 st stage	2 nd stage			
APE-5	3.7 (5)	Two-stage	60	700	18	2.6	1740	70-79	190