

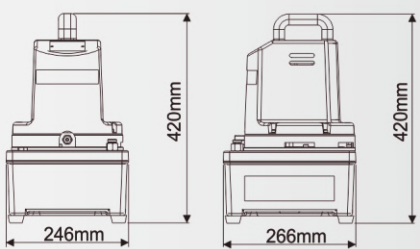
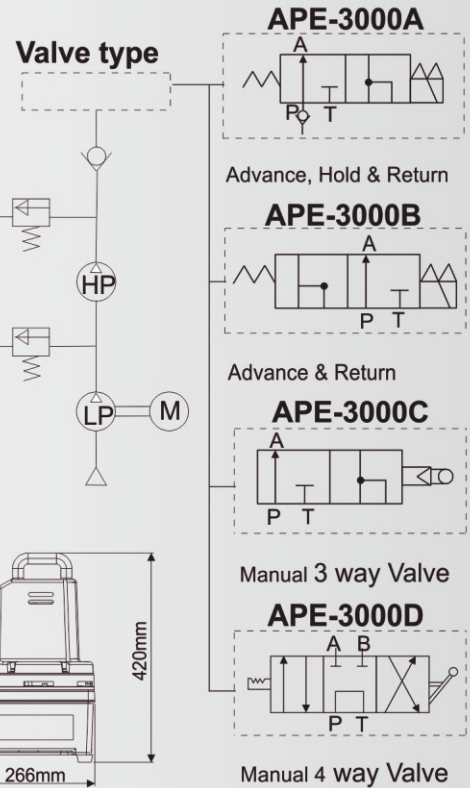
## HYDRAULIC ELECTRIC PUMP

### APE-3000 SERIES

Reservoir Cap: 3000-6000c.c  
 Flow at rated pressure: 4-0.4 L  
 Motor Size: 0.37kW(0.5 hp)  
 Max Operating Pressure:700 bar

### FEATURES

- Requires less energy, simple and easy to operate.
- Suitable for any industrial application.
- Handle and casing built together.
- Equipped with 10ft remote line.
- Carbon brush motor, working frequently.



Custom build your Electric Pump:

**APE-3000A 1 5 1 LT PBG**  
 1 2 3 4 5 6

- 1.Valve**
  - A. 3way/ 2position built-in Solenoid Valve**  
Advance Hold Return
  - B. Remote Release Pressure**  
Advance Return  
(Ideal for punching, crimping and cutting)
  - C.3way/ 2position Manual Valve**  
Advance Hold Manual return
  - D.4way/ 3position Manual Valve**  
Advance Hold Manual return
- 2.Voltage/A**
  - 1=115V/7.5A
  - 2=230V/2.8A
- 3.Hz**
  - 5=50/60Hz
- 4.Phase**
  - 1=1ph
- 5.Reservoir**
  - No word=3000c.c PU reservoir
  - LT=8000c.c Iron reservoir
  - ★User can order suitable reservoir.
- 6.fitting**
  - PJ=Pressure adjust switch
  - PB=Pressure adjuster
  - G=Pressure gauge



LT= Iron reservoir



PB=  
Pressure Adjuster Switch  
Part No.:SPS-7A-700



PJ=  
Pressure Adjust Switch  
Part No.:SPG-800-CE80



G= Pressure Gauge

#### Control Valve



A single-acting cylinder must be powered by a pump with a 3-way solenoid (built-in) or manual valve.  
**Compare Model : APE-3000APS (solenoid) or APE-3000CPS (manual)**



**APE-3000D**  
 A double-acting cylinder must be powered by a pump with a 4-way valve. **Compare Model : APE-3000D**

Model Number	Motor kW(hp)	Max.Pressure (psi)/(bar)	Pressure Rating (psi)/(bar)		Output flow rate (L/min)		dBA at Idle and 700bar	Weight (include oil) (kg)	Dimension (mm)
			1 <sup>st</sup> stage	2 <sup>nd</sup> stage	1 <sup>st</sup> stage	2 <sup>nd</sup> stage			
APE-3000	0.37(0.5)	10,000(700)	200(14)	10,000(700)	4	0.4	85-90	16	250*270*400
APE-3000 LT	0.37(0.5)	10,000(700)	200(14)	10,000(700)	4	0.4	85-90	24	300*350*460