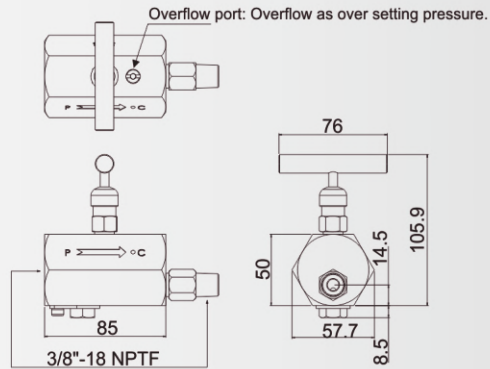
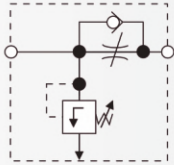


CHECK VALVE ASV SERIES

MANUALLY OPERATED CHECK VALVE

FEATURES

- Valve is manually opened to allow oil to flow back to tank when cylinder retracts.
- Used for load holding applications with single and double acting cylinder.

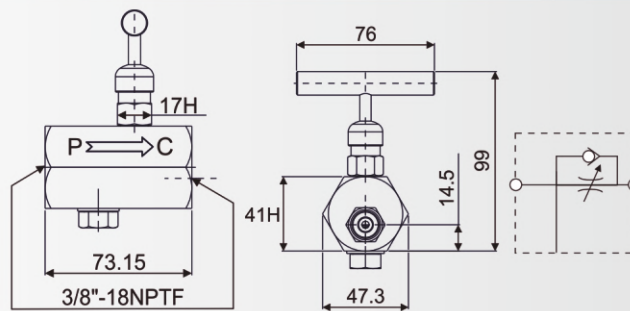


ASV-66

MANUALLY OPERATED CHECK VALVE

FEATURES

- Valve is manually opened to allow oil to flow back to tank when cylinder retracts.
- Used for load holding applications with single and double acting cylinder.

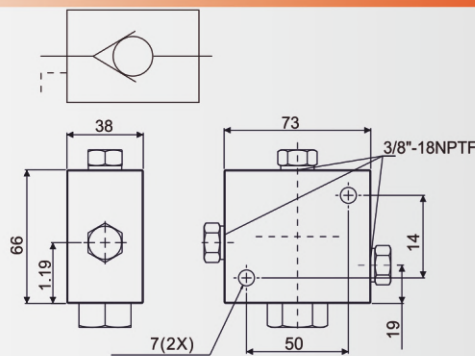


ASV-66-3

PILOT OPERATED CHECK VALVE

FEATURES

- Can be mounted at the cylinder to hold the load in case of system pressure loss.
- Normally used with double-acting cylinders where pilot port receives pressure from a T-fitting in the cylinder retract line. 3/8" NPTF female ports. Pilot pressure ratio 14% (6.5:1)

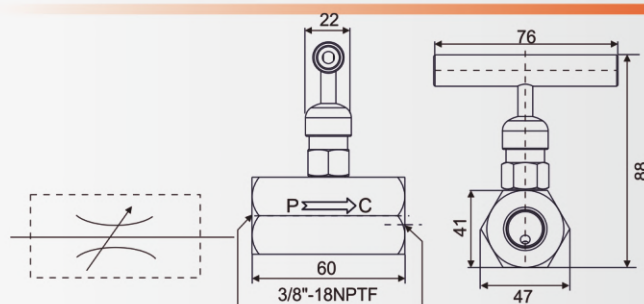


ASV-42

NEEDLE VALVE

FEATURES

- 3/8"-18NPTF female ports. To control cylinder speed.
- Also be used as shut-off valve for temporary load holding.



ASV-82

MANUALLY OPERATED CHECK VALVE

FEATURES

- Limits pressure developed by the pump in hydraulic circuit, thus limiting the force created by other component.
- Valve opens whenever preset pressure is reached. To increase pressure setting, turn handle clockwise.



ASV-152