

## HYDRAULIC CYLINDER THREADED RAM

### ADLL SERIES

Capacity: 50 - 400 TON

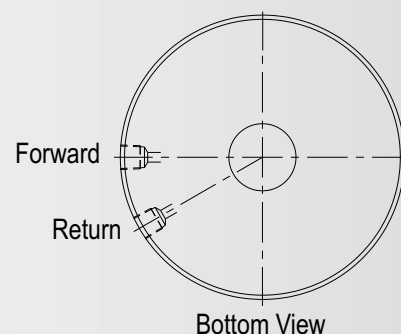
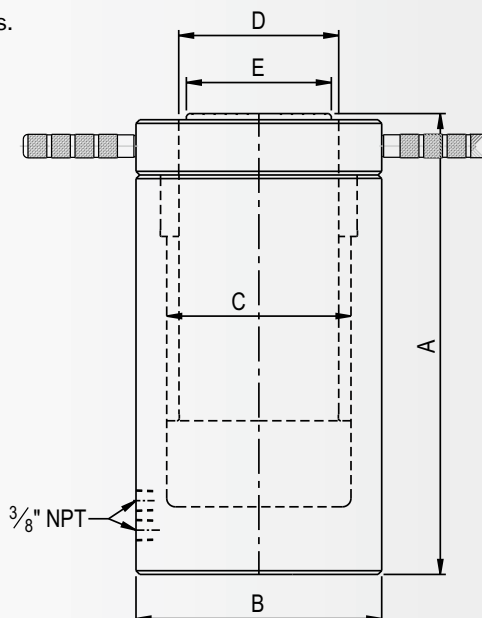
Stroke: 150-300 mm

700 Bar (10,000 psi)



## FEATURES

- Suits heavy lifting & push-pull applications.
- Safety Pressure Relief valve in return port prevents damage, in case of accidental over-pressurization due to blockage in return line.
- Spherical saddle reduces damage to jack against off-center load.
- Sustained load holding with lock nut in vertical & horizontal direction.
- Fast & complete ram retraction.
- Suited for Construction & Heavy industries.



Model	Rated capacity (ton)	Capacity @ 700 bar (kN)	Stroke (mm)	Effective area (cm <sup>2</sup> )	Oil cap. (cc)	A Closed height (mm)	B Cylinder OD (mm)	C Bore dia. (mm)	D Ram dia. (mm)	E Saddle dia. (mm)	Wt. (Approx.) (kg)
ADLL 506	50	535	150	76.4	1146	325	140	105	85	79	35
ADLL 5012	50	535	300	76.4	2293	475	140	105	85	79	48
ADLL 1006	100	1126	150	160.8	2412	350	195	150	125	115	76.5
ADLL 10012	100	1126	300	160.8	4825	500	195	150	125	115	102
ADLL 1506	150	1644	150	234.8	3524	380	235	180	140	132	110.5
ADLL 15012	150	1644	300	234.8	7045	530	235	180	140	132	146
ADLL 2006	200	2227	150	318.1	4772	400	270	210	170	160	159.5
ADLL 20012	200	2227	300	318.1	9543	550	270	210	170	160	202
ADLL 2506	250	2639	150	377.0	5655	400	300	230	180	170	197.5
ADLL 25012	250	2639	300	377.0	11310	550	300	230	180	170	250
ADLL 3006	300	3223	150	460.4	6907	410	330	255	205	195	248.5
ADLL 30012	300	3223	300	460.4	13814	560	330	255	205	195	315.5
ADLL 4006	400	4502	150	643.2	9650	435	385	300	250	235	357.5
ADLL 40012	400	4502	300	643.2	19298	585	385	300	250	235	458